

# EVACUATION SIGN



**OZ FIRE COMPLIANCE**  
Compliance made easy!

Phone: 1300 88 33 57 www.ozfirecompliance.com.au

## EVACUATION PROCEDURES

- Follow all instructions given by Wardens or Emergency Officers
- Leave immediately by the nearest safe exit and do not use lifts in a fire situation
- Move quickly, do not run
- If possible, close doors behind you
- Report to your designated assembly area
- Do not leave the assembly area until the designated Emergency Officer gives the "all-clear"
- If any injuries are sustained, notify an Emergency Officer
- Advise an Emergency Officer immediately if you are aware of people trapped in the building

## SAFETY CONSIDERATIONS



**R**emove persons from immediate danger



**A**lert nearby staff and members of the public and call 000 (operate manual call point if applicable)



**C**onfine fire and smoke, close windows and doors (if safe) and keep low under the smoke



**E**xtinguish and control the fire (if safe to do so)

## FIRE EXTINGUISHERS

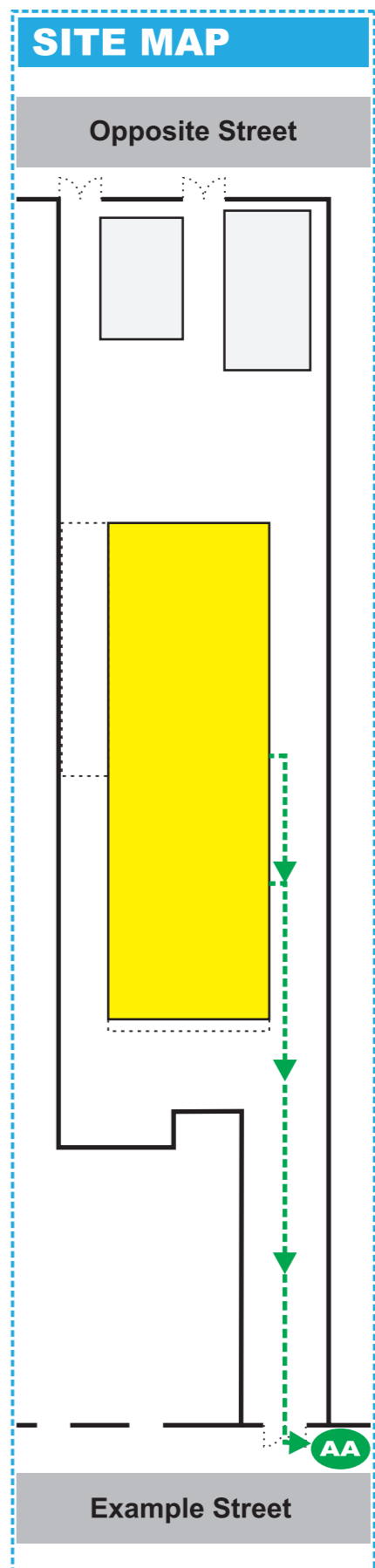
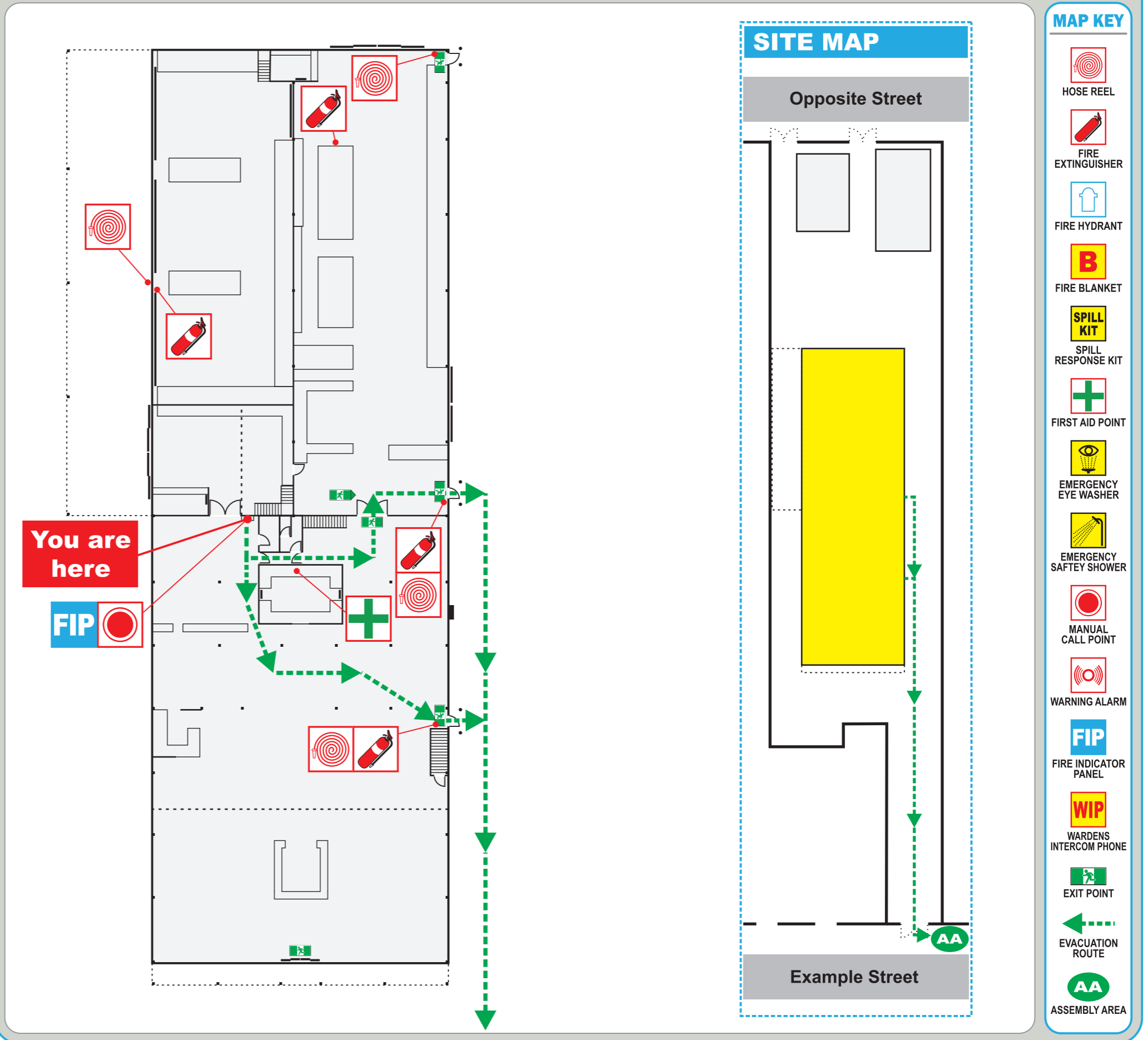
### Operating Instructions & Applications

- P**ull the pin
- A**im the nozzle
- S**queeze the trigger
- S**weep the base of the fire

	Water	Wet Chemical	Foam	Dry Chemical Powder ABE	Carbon Dioxide CO2	Vapourising Liquid	Fire Blanket
<b>A</b> Ordinary Combustible (Wood, Paper, Plastics, etc)	MOST SUITABLE	✓	✓	✓	✗	MOST SUITABLE	✓
<b>B</b> Flammable and Combustible Liquids	✗	✗	MOST SUITABLE	✓	✓	✓	✓
<b>C</b> Flammable Gases	✗	✗	✗	✓	✗	✗	✗
<b>E</b> Energised Electrical Equipment	✗	✗	✗	✓	MOST SUITABLE	✓	✗
<b>F</b> Cooking Oils & Fats	✗	MOST SUITABLE	✓	✗	LIMITED EFFECT	✗	✓

Business Name

Business Address, Suburb



### MAP KEY

- HOSE REEL
- FIRE EXTINGUISHER
- FIRE HYDRANT
- FIRE BLANKET
- SPILL KIT
- SPILL RESPONSE KIT
- FIRST AID POINT
- EMERGENCY EYE WASHER
- EMERGENCY SAFETY SHOWER
- MANUAL CALL POINT
- WARNING ALARM
- FIP
- WIP
- EXIT POINT
- EVACUATION ROUTE
- AA