

# EVACUATION SIGN



OZ FIRE COMPLIANCE  
Compliance made easy!

Phone: 1300 88 33 57 www.ozfirecompliance.com.au

## EVACUATION PROCEDURES

- Follow all instructions given by Wardens or Emergency Officers
- Leave immediately by the nearest safe exit and do not use lifts in a fire situation
- Move quickly, do not run
- If possible, close doors behind you
- Report to your designated assembly area
- Do not leave the assembly area until the designated Emergency Officer gives the "all-clear"
- If any injuries are sustained, notify an Emergency Officer
- Advise an Emergency Officer immediately if you are aware of people trapped in the building

## SAFETY CONSIDERATIONS



**R**emove persons from immediate danger



**A**lert nearby staff and members of the public and call 000 (operate manual call point if applicable)



**C**onfine fire and smoke, close windows and doors (if safe) and keep low under the smoke



**E**xtinguish and control the fire (if safe to do so)

## FIRE EXTINGUISHERS

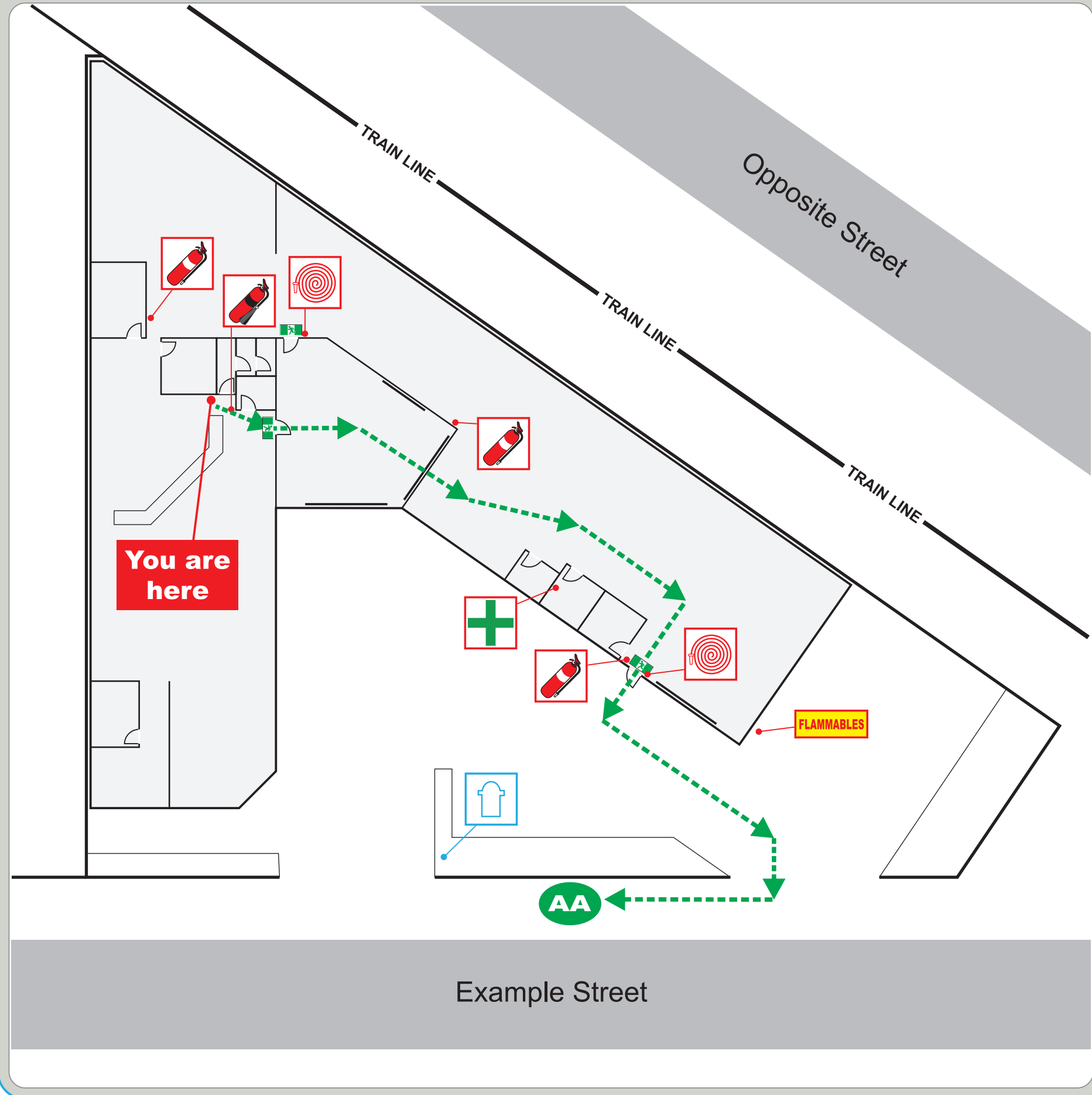
### Operating Instructions & Applications

- P**ull the pin
- A**im the nozzle
- S**queeze the trigger
- S**weep the base of the fire

|  | Water | Wet Chemical | Foam | Dry Chemical Powder ABE | Carbon Dioxide CO2 | Vapourising Liquid | Fire Blanket |
|--|-------|--------------|------|-------------------------|--------------------|--------------------|--------------|
| <b>A</b> Ordinary Combustible (Wood, Paper, Plastics, etc) | ✓     | ✓            | ✓    | ✓                       | ✗                  | ✓                  | ✓            |
| <b>B</b> Flammable and Combustible Liquids                 | ✗     | ✗            | ✓    | ✓                       | ✓                  | ✓                  | ✓            |
| <b>C</b> Flammable Gases                                   | ✗     | ✗            | ✗    | ✓                       | ✗                  | ✗                  | ✗            |
| <b>E</b> Energised Electrical Equipment                    | ✗     | ✗            | ✗    | ✓                       | ✓                  | ✓                  | ✗            |
| <b>F</b> Cooking Oils & Fats                               | ✗     | ✓            | ✓    | ✗                       | ✓                  | ✗                  | ✓            |

Business Name

Business Address, Suburb



### MAP KEY



HOSE REEL



FIRE EXTINGUISHER



FIRE HYDRANT



FIRE BLANKET



SPILL RESPONSE KIT



FIRST AID POINT



EMERGENCY EYE WASHER



EMERGENCY SAFETY SHOWER



MANUAL CALL POINT



WARNING ALARM



FIRE INDICATOR PANEL



WARDENS INTERCOM PHONE



EXIT POINT



EVACUATION ROUTE



ASSEMBLY AREA