

EVACUATION SIGN



OZ FIRE COMPLIANCE
Compliance made easy!

Phone: 1300 88 33 57 www.ozfirecompliance.com.au

EVACUATION PROCEDURES

- Follow all instructions given by Wardens or Emergency Officers
- Leave immediately by the nearest safe exit and do not use lifts in a fire situation
- Move quickly, do not run
- If possible, close doors behind you
- Report to your designated assembly area
- Do not leave the assembly area until the designated Emergency Officer gives the "all-clear"
- If any injuries are sustained, notify an Emergency Officer
- Advise an Emergency Officer immediately if you are aware of people trapped in the building

SAFETY CONSIDERATIONS



Remove persons from immediate danger



Alert nearby staff and members of the public and call 000 (operate manual call point if applicable)



Confine fire and smoke, close windows and doors (if safe) and keep low under the smoke



Extinguish and control the fire (if safe to do so)

FIRE EXTINGUISHERS

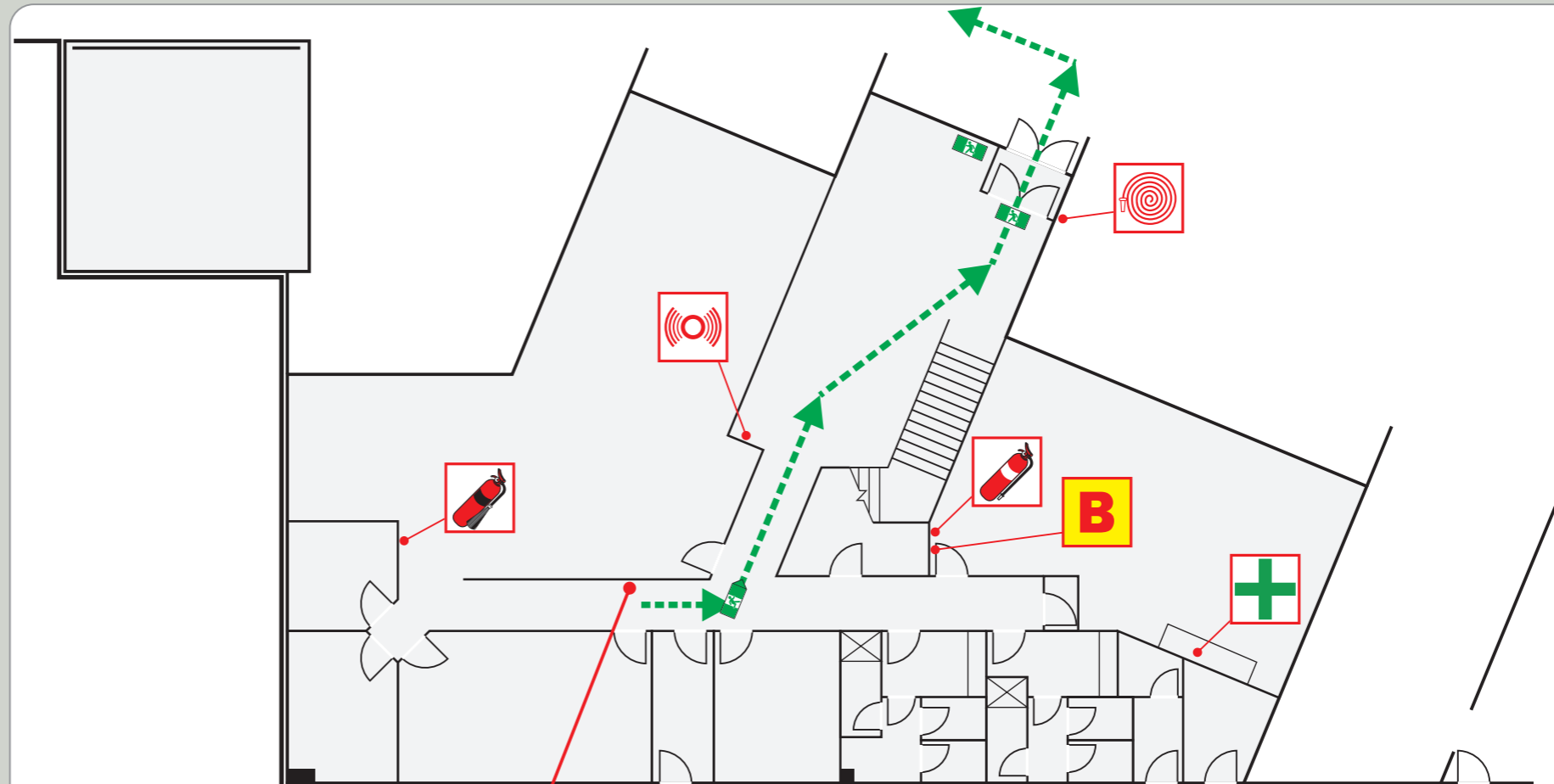
Operating Instructions & Applications

- P**ull the pin
Aim the nozzle
Squeeze the trigger
Sweep the base of the fire

	Water	Wet Chemical	Foam	Dry Chemical Powder ABE	Carbon Dioxide CO2	Vapourising Liquid	Fire Blanket
A Ordinary Combustible (Wood, Paper, Plastics, etc)	MOST SUITABLE	✓	✓	✓	✗	MOST SUITABLE	✓
B Flammable and Combustible Liquids	✗	✗	MOST SUITABLE	✓	✓	✓	✓
C Flammable Gases	✗	✗	✗	✓	✗	✗	✗
E Energised Electrical Equipment	✗	✗	✗	✓	MOST SUITABLE	✓	✗
F Cooking Oils & Fats	✗	MOST SUITABLE	✓	✗	LIMITED EFFECT	✗	✓

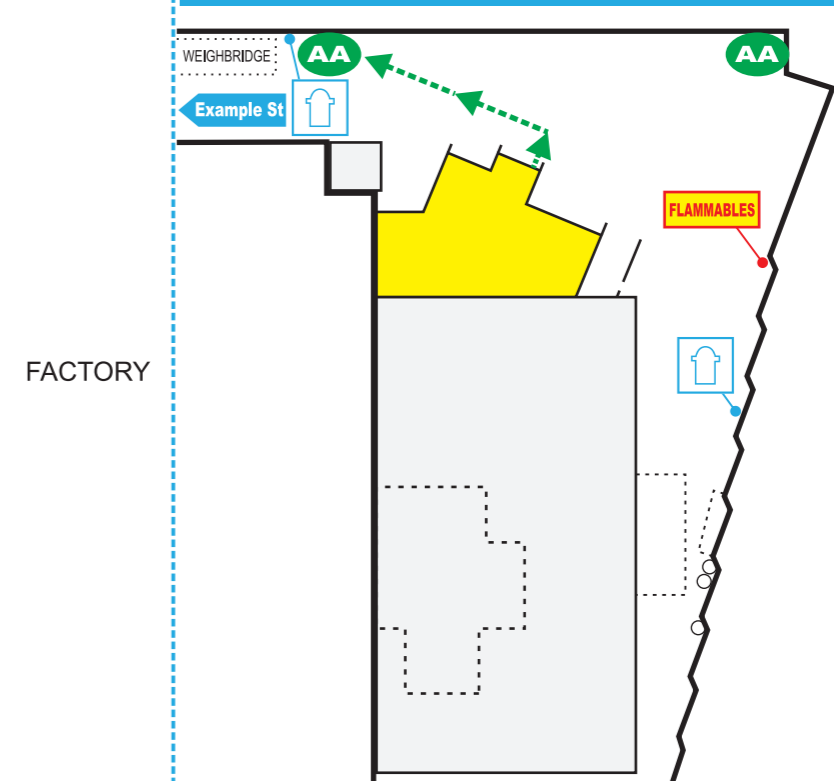
Business Name

Business Address, Suburb



You are here

SITE MAP



MAP KEY



HOSE REEL



FIRE EXTINGUISHER



FIRE HYDRANT



FIRE BLANKET



SPILL KIT



FIRST AID POINT



EMERGENCY EYE WASHER



EMERGENCY SAFETY SHOWER



MANUAL CALL POINT



WARNING ALARM



FIRE INDICATOR PANEL



WARDENS INTERCOM PHONE



EXIT POINT



EVACUATION ROUTE



ASSEMBLY AREA